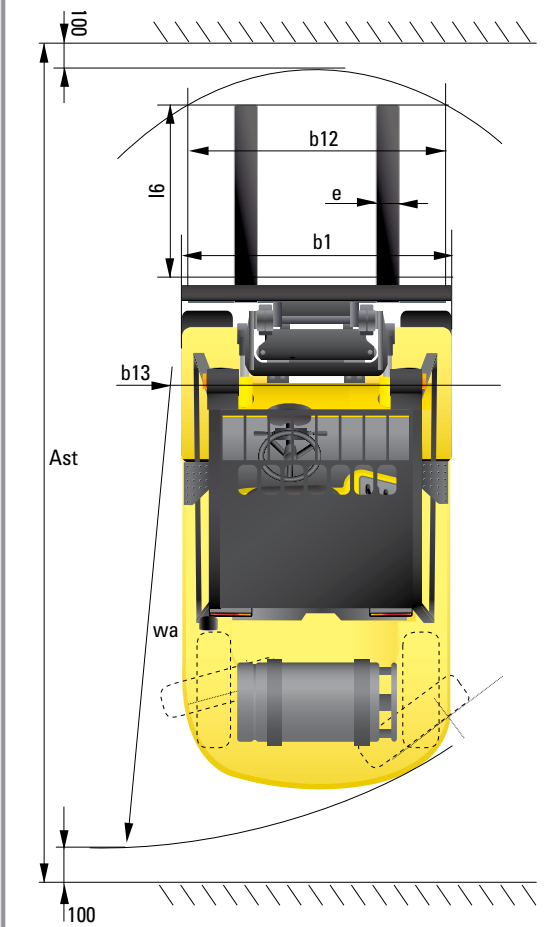
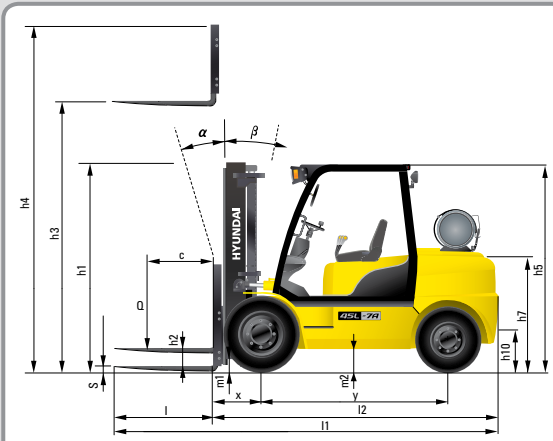


Dimension



Specification

Identification						
1.1	Manufacturer	Hyundai	Hyundai	Hyundai	Hyundai	
1.2	Manufacturer's type designation	35L-7A	40L-7A	45L-7A	50L-7A	
1.3	Drive: electric (battery or mains), diesel, petrol, fuel gas, manual	LP	LP	LP	LP	
1.4	Type of operation: hand, pedestrian, standing, seated, order-picker	seated	seated	seated	seated	
1.5	Load capacity / rated load	Q (lb)	7,720	8,820	9,920	11,020
1.6	Load center distance	c (in)	24	24	24	24
1.8	Load distance, center of drive axle to fork	x (in)	22.1	22.1	22.1	22.7
1.9	Wheelbase	y (in)	78.7	78.7	78.7	78.7
Weights						
2.1	Service weight	lb	12,330	13,590	14,500	15,530
2.2	Axle loading, loaded front/rear	lb	18,000 / 2,940	20,050 / 2,360	21,810 / 2,620	23,620 / 3,020
2.3	Axle loading, unloaded front/rear	lb	5,810 / 6,520	6,110 / 7,480	6,130 / 8,380	6,200 / 9,320
Wheels, Chassis						
3.1	Tires: solid rubber, superplastic, pneumatic, polyurethane	Pneumatic	Pneumatic	Pneumatic	Pneumatic	
3.2	Tires size, front (width x ϕ)	8.25-15-14	7.50-16-12	7.50-16-12	7.50-16-12	
3.3	Tires size, rear (width x ϕ)	7.00-12-12	7.00-12-12	7.00-12-12	7.00-12-14	
3.5	Wheels, number front x rear (x=driven wheels)	2 x 2	4 x 2	4 x 2	4 x 2	
3.6	Track width, front	b10 (in)	44.6	50.5	50.5	50.5
3.7	Track width, rear	b11 (in)	44.9	44.9	44.9	44.9
Basic Dimensions						
4.1	Mast / fork carriage tilt forward / backward (α / β)	degrees	8 / 10	8 / 10	8 / 10	8 / 10
4.2	Lowered mast height	h1 (in)	88.0	86.6	86.6	86.6
4.3	Free lift	h2 (in)	4.7	4.7	4.7	4.7
4.4	Lift height	h3 (in)	118.9	118.9	118.9	115.4
4.5	Extended mast height	h4 (in)	166.3	166.3	166.7	163.3
4.7	Overhead load guard (cab) height	h5 (in)	86.6 / 88.2 / 92.1	86.6 / 88.2 / 92.1	86.6 / 88.2 / 92.1	86.6 / 88.2 / 92.1
4.8	Seat height / standing height	h7 (in)	43.3	43.3	43.3	43.3
4.12	Coupling height	h10 (in)	36.4	36.4	36.4	36.4
4.19	Overall length	l1 (in)	163.0	165.2	173.4	175.2
4.20	Length to face of forks	l2 (in)	120.9	123.0	125.4	128.0
4.21	Overall width	b1 (in)	53.9	68.5	68.5	68.5
4.22	Fork dimensions	s / e / l (in)	42.1 x 8.7 x 2.0	42.1 x 5.9 x 2.0	48.0 x 5.9 x 2.0	47.2 x 5.9 x 2.4
4.23	Fork carriage ISO 2328, class / type A/B		III / A	III / A	IV / A	IV / A
4.24	Fork-carriage width	b12 (in)	52.7	64.5	64.5	66.0
4.31	Ground clearance, loaded, under mast	m1 (in)	6.7	6.1	6.1	6.1
4.32	Ground clearance, centre of wheelbase	m2 (in)	205	205	205	200
4.33	Aisle width for pallets 1000x1200 crossways	Ast (in)	179.8	181.9	183.7	185.4
4.34	Aisle width for pallets 800x1200 lengthways	Ast (in)	187.7	189.8	191.6	193.2
4.35	Turning radius	Wa (in)	110.5	112.6	114.4	116.0
4.36	Smallest pivot point distance	b13 (in)	39.7	39.7	39.7	39.7
Performance Data						
5.1	Travel speed, Unloaded	mph	14.8	14.2	14.2	14.2
5.2	Lift speed, Loaded/Unloaded	fpm	100.4 / 104.3	100.4 / 104.3	100.4 / 104.3	100.4 / 104.3
5.3	Lowering speed, Loaded/Unloaded	fpm	98.4 / 88.5	98.4 / 88.5	98.4 / 88.5	98.4 / 88.5
5.5	Drawbar pull, Loaded	lb	8,820	8,960	8,660	8,620
5.7	Gradient performance, Loaded	%	40.5	36.2	31.6	28.7
5.10	Service brake		Hydraulic	Hydraulic	Hydraulic	Hydraulic
Engine						
6.1	Engine manufacturer / type		GM 4.3L	GM 4.3L	GM 4.3L	GM 4.3L
6.2	Engine power acc. to ISO 1585	HP	95.2	95.2	95.2	95.2
6.3	Rated speed	1/min	2,300	2,300	2,300	2,300
6.4	No. of cylinder / cubic capacity	/cm ³	6 / 4,294	6 / 4,294	6 / 4,294	6 / 4,294
Other Details						
8.2	Type of drive control		Power Shift	Power Shift	Power Shift	Power Shift
8.3	Operating pressure	bar	210 / 150	210 / 150	210 / 150	210 / 150
8.4	Oil volume	litter	66	66	66	66
8.5	Noise	db(A)	85	85	85	85



■ Some of the photos may include optional equipment.

North America only

HYUNDAI LPG FORKLIFT TRUCKS **Applied Tier 4 Engine**

35L/40L/45L/50L-7A

HYUNDAI
HEAVY INDUSTRIES CO., LTD.
FORKLIFT

Head Office (Sales Office)
14th FL., HYUNDAI BLDG. 140-2, KYE-DONG, JONGNO-GU, SEOUL, KOREA 110-793
TEL: (82) (2) 746-4505, 4609 FAX: (82) (2) 746-7444-7445

Americas Operation: Hyundai Construction Equipment Americas, Inc.
6100 ATLANTIC BOULEVARD NORDCROSS GA 30071 U.S.A TEL: (1)847-678-823-7802 FAX: (1)847-678-823-7778

Europe Operation: Hyundai Heavy Industries Europe N.V.
VOSSENDAAL 11, 2440 GEEL, BELGIUM TEL: (32) 14-56-2200 FAX: (32) 14-59-3405

PLEASE CONTACT

www.hyundai-ce.com

2010.11 Rev 1.

We build a better future

NEW criteria of Forklift Trucks

Hyundai introduces a new line of 7A series
LPG forklift trucks.
Excellent power and performance make your
business more profitable.



■ Some of the photos may include optional equipment.

OPSS (Operator Presence Sensing System)
Control of mast tilting, lifting and lowering is not possible through operation of the appropriate control when the operator is not in the seated position.

The new master on the job-site!

Smooth running, efficient and ergonomically designed, 35/40/45/50L-7A series are made to meet your needs.

95.2HP/2,300rpm



Powerful Engine GM 4.3L V6 Engine

Market approved quality of GM 4.3L V6 engine ensures incomparable performance, durability and additional value to the machine. Powerful and efficient engine provides excellent fuel economy and excellent torque for improved operation.

(EPA/CARB Tier-IV Certified)

Fast and Stable Performance

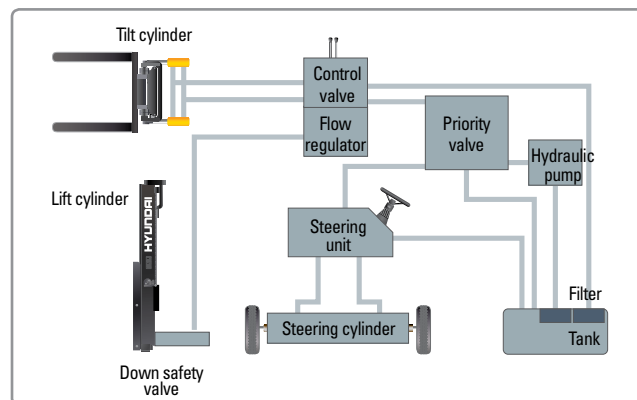
Being able to quickly raise and lower the mast, as well as tilt it forward and backward, provides the best operational conditions during unloading.

When the truck is fully loaded, mast lowering speed is carefully controlled to ensure safety by the down control valve.

Mast(Lift and Tilt) Look System is standard.



Some of the photos may include optional equipment.



State-of-the-art Hydraulic System

The latest large-capacity hydraulic system reacts quickly during operation, and a low-noise control valve increases both efficiency and durability.



Fully Hydrostatic Power Steering

A hydraulic steering system always guarantees smooth and flexible steering, preventing overrun and kick-back.



Increased Mast Tilting Angle

Utilizing the mast tilting angle of 8 degrees forward and 10 degrees backward, the operator can safely and rapidly perform loading and unloading jobs.

Faster Travel Speed & Better Gradability

The powerful high-output engine provides greater acceleration, better gradability and faster travel speed on any tough terrains or slopes.



Gradability(Loaded)

35L-7A : 40.5% 45L-7A : 31.6%
40L-7A : 36.2% 50L-7A : 28.7%

Travel Speed(Unloaded)

35L-7A : 14.8 mph
40L-7A : 14.2 mph
45L-7A : 14.2 mph
50L-7A : 14.2 mph

Ergonomic operator friendly compartment design!

A design based on human engineering relieves fatigue and increases operator's efficiency.

Operator Friendly Gauges and Water-resistant Monitor Panel



- 1 Parking brake lamp
- 2 Turn lamp
- 3 Engine oil warning lamp
- 4 Transmission oil temperature warning lamp
- 5 Battery charging warning lamp
- 6 Air cleaner filter warning light
- 7 Working light indicator
- 8 Seat belt warning
- 9 Water temperature gauge
- 10 OPS warning (option)
- 11 Hour meter
- 12 Engine check lamp



Full Suspension Seat
An attractive and adjustable seat, based on a human engineering design, provides great comfort, safety and durability.



New High Visibility for Safe Operation
The operator is able to work with increased safety and accuracy due to a wider view mast.



Some of the photos may include optional equipment.



Ergonomically Positioned Pedals
Based on human engineering, the accelerator, brake and inching pedals are optimally positioned for convenience while operating the equipment.



Cup Holder & Console Box
Additional storage spaces are located inside the operating space for operator's convenience.



Quick Response of Operating Control Levers
Only minimal operator's effort is required for precise, safe and productive control.



Adjustable Steering Wheel
Steering wheel with horn button can be adjusted by a lever on the right-hand side for the most comfortable operator position.



Easy and Safe Shift Lever
A single lever on the left side of the steering column gives the operator fast, easy control of direction. The lever must be in the neutral position before the engine can be started.



Secondary Horn
Secondary Horn gives access to lights and horn.

Danger-free through high durability!

Safety and durability are priorities in design of the equipment.



Strong Overhead Guard

The safety overhead guard meets ISO 6055 regulation and protects the operator during hazardous jobs.



Parking brake

Ratchet type parking brake requires less effort the operator to set.

Highly Durable Split type Drive Axle

The planetary reduction drive axle smoothly delivers desired torque to the drive wheels.



Some of the photos may include optional equipment.



Large Footboard & Hand Grip

Wide "open" step offers convenience and safety when entering and exiting truck.



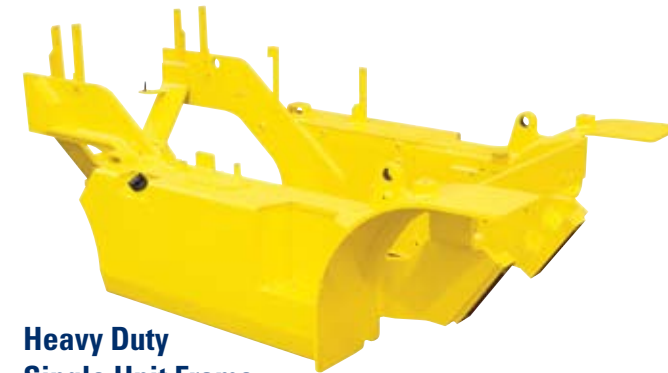
Expansion Bellows

The expansion bellows absorbs vibration and reduces noise generated from the exhaust system and also extends the life cycle of exhaust system.



Electrically Monitored Air Filter

Air cleaner sensor alerts the operator of a restricted air filter and allows replacement before damage.



Heavy Duty Single Unit Frame

Heavy duty single unit type frame, designed on the basis of accurate structural analysis, guarantees durability and safety.



Bright, Protected Headlights

Bright, Protected head lights are positioned for exceptional visibility.



Ground Clearance

The engine and transmission are assembled horizontally and positioned high in the frame to protect major components during operation on rugged surface.

Designed for quick and easy service!

An ideal arrangement of component parts ensures easy access and convenience for maintenance.



Easy Change Air Cleaner

The air filter is readily accessible for cleaning or replacement. (6inch Cyclone Type)



Fast Service Access for Daily Fluids Check



Maintenance Free Battery



Aluminum Radiator with Superb Protection Against heat



Removable Side Panels for Ease of Service



Easy access of electrical Components

Various electric parts are centralized in dash board resulting in improvement in maintenance.



Easy Maintenance Oil Check

The T/M oil level can be checked easily without any disassembly.



Brake Fluid Reservoir

Highly visible, easily accessible reservoir makes for quicker daily inspections.



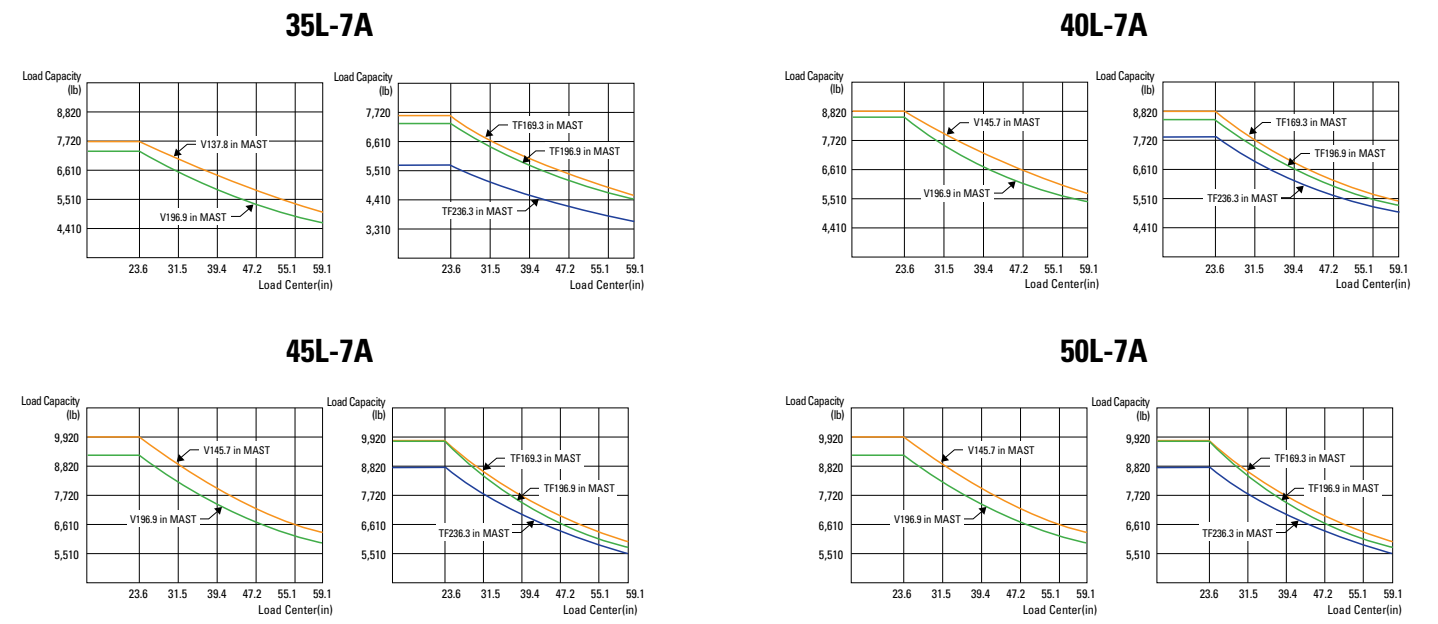
An Accessible, Compact Fuse Box for Easy Inspection

Mast Specification

Mast Type	Maximum Fork Height (in)		Overall Height Lowered (in)		Free Lift Height (in)				Tilt Angle (deg)	Load Capacity without side shift at 24 in LC (lb)						Load Capacity with side shift at 24 in LC (lb)						Truck Weight (Unloaded) (lb)												
	35L/40L		35L/40L		With Backrest		Without Backrest			Single Tire			Double Tire			Single Tire			Double Tire			Single Tire			Double Tire									
	45L-7A	50L-7A	45L-7A	50L-7A	35L/40L	45L-7A	35L/40L	45L-7A		Fwd/Bwd	35L-7A	40L-7A	45L-7A	50L-7A	35L-7A	40L-7A	45L-7A	50L-7A	35L-7A	40L-7A	45L-7A	50L-7A	35L-7A	40L-7A	45L-7A	50L-7A								
2-Stage Limited Free Lift	V270	107.1	103.5	82.1	81.5	4.7	4.7	4.7	4.7	8/10	7,700	8,800	9,900	11,000	7,700	8,800	9,900	11,000	7,700	8,800	9,900	11,000	12,239	13,259	14,168	15,193	12,580	13,493	14,408	15,440				
	*V300	118.9	115.4	88.0	87.4	4.7	4.7	4.7	4.7	8/10	7,700	8,800	9,900	11,000	7,700	8,800	9,900	11,000	7,700	8,800	9,900	10,890	7,700	8,800	9,900	10,890	12,305	13,325	14,234	15,248	12,646	13,559	14,474	15,486
	V330	130.7	127.2	93.9	93.3	4.7	4.7	4.7	4.7	8/10	7,700	8,800	9,900	11,000	7,700	8,800	9,900	11,000	7,700	8,800	9,790	10,670	7,700	8,800	9,790	10,670	12,388	13,409	14,318	15,303	12,729	13,642	14,557	15,550
	V350	138.6	135.0	99.8	99.2	4.7	4.7	4.7	4.7	8/10	7,700	8,800	9,900	11,000	7,700	8,800	9,900	11,000	7,590	8,690	9,680	10,560	7,590	8,690	9,680	10,560	12,439	13,460	14,368	15,368	12,780	13,693	14,608	15,605
	V370	146.5	142.9	103.7	103.1	4.7	4.7	4.7	4.7	8/10	7,700	8,800	9,900	11,000	7,700	8,800	9,900	11,000	7,480	8,580	9,570	10,450	7,480	8,580	9,570	10,450	12,483	13,504	14,412	15,396	12,824	13,737	14,652	15,640
	V400	158.3	154.7	112.0	111.4	4.7	4.7	4.7	4.7	8/10	7,700	8,800	9,900	10,780	7,700	8,800	9,900	10,780	8,360	9,350	10,230	11,110	8,360	9,350	10,230	11,110	12,577	13,598	14,507	15,473	12,916	13,831	14,744	15,719
2-Stage Full Free Lift	V450	178.0	174.4	121.9	121.3	4.7	4.7	4.7	4.7	8/6	7,590	8,580	9,570	10,450	7,590	8,580	9,570	10,450	7,150	8,140	9,020	9,790	7,150	8,140	9,020	9,900	12,824	13,845	14,753	15,699	13,165	14,078	14,993	15,946
	V500	197.6	194.1	131.7	131.1	4.7	4.7	4.7	4.7	8/6	7,370	8,250	9,350	10,120	7,370	8,470	9,350	10,230	6,930	7,810	8,800	9,460	6,930	7,920	8,690	9,570	12,936	13,957	14,865	15,792	13,277	14,190	15,105	16,038
	VF280	110.4	106.2	84.1	83.5	49.5	35.6	36.2	48.1	6/8	7,700	8,800	9,900	11,000	7,700	8,800	9,900	11,000	7,700	8,800	9,900	11,000	7,700	8,800	9,900	11,000	12,329	13,350	14,247	15,233	12,663	13,576	14,487	15,479
	VF300	118.3	114.1	88.0	87.4	53.5	39.6	40.1	52.1	6/8	7,700	8,800	9,900	11,000	7,700	8,800	9,900	11,000	7,700	8,800	9,900	10,890	7,700	8,800	9,900	10,890	12,386	13,407	14,304	15,288	12,720	13,633	14,544	15,534
	VF315	124.2	120.0	91.5	90.9	57.0	43.1	43.7	55.6	6/8	7,700	8,800	9,900	11,000	7,700	8,800	9,900	11,000	7,590	8,800	9,900	10,780	7,700	8,800	9,790	10,780	12,430	13,451	14,346	15,327	12,764	13,633	14,544	15,534
	TF370	146.9	144.6	80.1	79.5	32.4	31.8	45.2	42.3	6/6	7,700	8,800	9,900	11,000	7,700	8,800	9,900	11,000	7,260	8,470	9,350	10,340	7,260	8,470	9,350	10,230	12,804	13,825	14,733	15,638	13,145	13,981	14,978	15,866
3-Stage Full Free Lift	TF400	158.7	156.4	84.1	83.5	36.3	35.7	49.2	46.2	6/6	7,590	8,800	9,790	10,780	7,590	8,800	9,790	10,780	7,150	8,250	9,240	10,120	7,260	8,250	9,130	10,120	12,870	13,891	14,799	15,695	13,211	14,047	15,044	15,924
	TF430	170.5	168.2	88.0	87.4	40.2	39.6	53.1	50.2	8/8	7,480	8,580	9,570	10,560	7,480	8,580	9,570	10,560	6,930	8,140	9,020	9,900	7,040	8,140	9,020	9,900	12,938	13,959	14,868	15,750	13,279	14,115	15,112	15,979
	TF450	177.6	175.3	90.4	90.2	42.6	42.0	55.5	52.5	6/6	7,370	8,580	9,460	10,450	7,480	8,690	9,460	10,450	6,930	8,140	8,910	9,790	7,040	8,140	8,910	9,790	12,880	14,001	14,909	15,787	13,321	14,157	15,154	16,014
	TF470	185.8	183.5	93.9	94.1	46.1	45.5	59.0	56.1	6/6	7,260	8,470	9,350	10,230	7,370	8,580	9,350	10,340	6,820	7,920	8,800	9,680	6,930	8,030	8,800	9,680	13,059	14,080	14,989	15,838	13,400	14,236	15,235	16,067
	TF500	197.6	195.4	97.8	97.2	50.1	49.5	63.0	60.0	6/6	7,150	8,250	9,240	10,120	7,260	8,250	9,240	10,120	6,710	7,700	8,580	9,570	6,820	7,810	8,580	9,570	13,112	14,131	15,039	15,893	13,451	14,287	15,286	16,122
	TF550	217.3	215.0	104.9	104.3	57.2	56.6	70.0	67.1	6/6	6,820	7,920	8,910	9,790	7,040	8,030	8,910	9,900	6,050	7,370	8,030	9,240	6,600	7,590	8,360	9,240	13,246	14,267	15,176	16,007	13,585	14,421	15,420	16,236
TF600	237.4	235.1	112.0	111.4	64.3	63.6	77.1	74.2	6/6	5,720	6,710	7,700	8,680	6,820	7,700	8,580	9,570	5,390	6,380	6,820	7,600	6,380	7,260	8,030	9,020	13,396	14,417	15,325	16,097	13,737	14,573	15,569	16,324	
TF650	257.1	255.2	119.1	118.5	71.3	70.7	84.2	81.3	6/6	5,500	6,380	7,260	8,140	6,600	7,370	8,250	9,350	5,170	6,050	6,600	7,480	6,180	6,930	7,810	8,800	13,488	14,509	15,418	16,188	13,827	14,663	15,662	16,416	

*Standard

Load Capacity



Optional Items

- CABIN
- SIDE SHIFT
- INTEGRAL SHAFT TYPE CARRIAGE(4.0 / 4.5TON)
- FORK (LxWxT)(in)
 - 35L/40L-7A: 48.0 x 4.8 x 2.0 53.9 x 4.8 x 2.0 59.8 x 4.8 x 2.0
 - 45L/50L-7A: 65.7 x 4.8 x 2.0 71.7 x 4.8 x 2.0 77.6 x 4.8 x 2.0
- OPPS (Travel / Travel + mast)
- OVER SHOE : 71 in, 79 in, 87 in
- TILTING : 8/6°, 8/8°
- TIRE : Cushion, No-marking, Double
- SEAT : Pocket, Arm Rest, Hip Rest
- LPG CLAMP : Swing Out
- M.C.V : 4-Spool
- ATTACH PIPING : 3 Spool-piping, 4 Spool-piping
- MASTER SWITCH
- BEACON LAMP
- HAZARD SWITCH
- BRAKE PEDAL
 - Hydraulic Booster (w/o Accumulator)