

# COMPACT-RADIUS EXCAVATOR FAMILY

HX145LCR, HX235LCR

Tier 4 Final Engines



**TOMORROW'S EDGE TODAY**



# COMPACT-RADIUS EXCAVATORS

Hyundai delivers tomorrow's edge today. Our HX series compact-radius excavators answer your needs for speed, precision, power and performance. Your operators will appreciate the convenience, comfort and safety of

Hyundai HX series compact-radius excavators. And your bottom line will benefit from the reliability, ease of service, low cost of ownership and industry-leading warranties that Hyundai delivers in every machine we produce.



**HX145LCR**

**HX145LCR**

**Net Power**  
Perkins 1204F  
SAE J1349 / 116 HP  
(87 kW) at 1,950 rpm

**Operating Weight**  
15,189 kg / 33,486 lb  
15,989 kg / 35,250 lb  
with optional dozer blade

**Bucket Range**  
0.30 yd<sup>3</sup> – 0.93 yd<sup>3</sup>  
0.23 m<sup>3</sup> – 0.71 m<sup>3</sup>

**Standard Bucket**  
0.52 m<sup>3</sup> – 0.68 yd<sup>3</sup>

\* Machine pictured includes optional equipment.

# HX145LCR, HX235LCR

Both of our LCR model excavators feature a compact tail swing design, ideal for working in confined spaces, yet with all the power needed for heavy construction

applications. The HX145LCR has a tail swing radius of just 4 ft 11 in (1,500 mm), and the HX235LCR has a tail swing radius of 6 ft 4 in (1,780 mm).



**HX235LCR**

**HX235LCR**

**Net Power**  
 Cummins QSB 6.7  
 Tier 4 Final engine  
 SAE J1349 / 173 HP  
 (129 kW) at 1,950 rpm

**Operating Weight**  
 24,560 kg / 54,140 lb  
 26,060 kg / 57,452 lb  
 with optional dozer blade

**Bucket Range**  
 0.67 yd<sup>3</sup> – 1.75 yd<sup>3</sup>  
 0.51 m<sup>3</sup> – 1.34 m<sup>3</sup>

**Standard Bucket**  
 0.80 m<sup>3</sup> – 1.05 yd<sup>3</sup>

\* Machine pictured includes optional equipment.

↑  
**Up To  
12%**

**Faster cycle speeds**  
(As compared to previous 9A series)



\* HX235LCR pictured with an optional two-piece boom. Standard boom is one piece.

### **Boom Float Mode Option**

This new option improves stability and control when leveling, allowing the boom to float along with the arm-in and arm-out movement.

### **Swing-lock System Option**

To better control the swing and upper movement while operating on a slope, this optional system hydraulically blocks the swing function when controls are not being actuated.

### **Fine Swing Control Option**

The optional fine swing control provides additional precision through reduced swing shock under load at slow swing speeds.

# TOMORROW'S EDGE TODAY

## Optimal Performance with Fuel Efficiency

Others promise performance. Hyundai proves it. Hyundai excavators are known for fast cycle speeds, impressive hydraulic power and precision control. Adding to that success formula, the Hyundai HX series features eco-friendly, high-performance engines that meet the Tier 4 Final emission requirements.

## New Variable Power Control

The HX series introduces variable power control with three power modes to ensure the highest performance in any operating environment.

- P (power) mode: Maximizes speed and power for heavy work.

- S (standard) mode: Optimizes performance and fuel efficiency for general work.
- E (economy) mode: Improves control and efficiency for light work.

## Electronic Viscous Fan Clutch

The electronic fan clutch reduces noise and minimizes fuel consumption during operation by precisely controlling RPM depending on the hydraulic oil and coolant temperature. During cold applications the fan slows to allow hydraulic oil to warm up to optimal operating temperature.



### Eco Gauge

Using this function, your operator can monitor fuel consumption in real time or review historical data. The colored gauge represents engine torque and fuel efficiency. Also displayed are the average and total fuel consumed. The hourly and daily fuel consumption is also viewable through the menu.



### IPC (Intelligent Power Control)

This mode analyzes operator control patterns, and automatically adjusts engine RPM and hydraulic flow to ensure maximum fuel economy and productivity.



### Robust Cooler Door with Vented Grill

The cooler door grill is designed for maximum air flow and reduced contamination.



### Attachment Flow Control

The Hyundai HX series optimizes pump flow by giving the operator independent control of two pumps. It optimizes flow rate settings according to the attachment type (ten breaker types and ten crusher types), which is ideal for various applications.



### New Cooling System with Increased Air Flow

The HX series has a vertically stacked cooling configuration which provides improved cooling efficiency through increased air flow and reduced heat.



### One Pedal Straight Travel (Option)

With the flip of a toggle switch, the left-hand pedal can be set for straight forward and reverse travel. This is ideal when working along roads, banks and trenches, and when traveling longer distances. The Hyundai-exclusive one-pedal toggle switch design replaces the traditional extra pedal, freeing up floor space for your operator.

# RELIABLE AND DURABLE

## Rugged for Today, Durable for Years

Reliable productivity is part of the Hyundai edge. The robust upper and lower frame structure can endure external shock and heavy workloads for many thousands of hours. Starting with our strict, demanding prototype testing procedures, Hyundai tests new designs in harsh

environments with actual operators for 10,000 hours prior to bringing a new model to market. No matter how tough your working environment is, you can always rely on the Hyundai HX series.



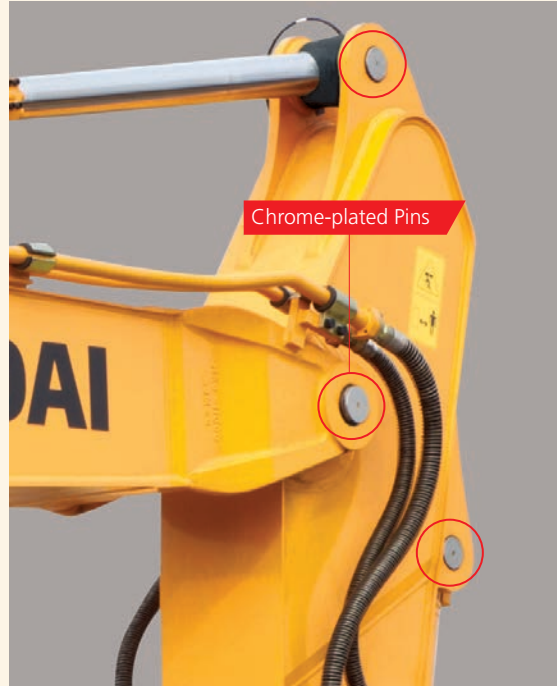
### Heavy-Duty Cooling Module

Each HX series excavator has a heavy-duty cooling module designed to provide maximum engine protection in the harshest working environments.



### Wear Resistant Cover Plate

A wear-resistant cover plate at the end of the arm minimizes abrasion on the pin connection between the arm and the bucket. This reduces bucket vibrations for improved operator control, even under heavy load conditions.



Chrome-plated Pins

### Reinforced Pins, Bushings and Polymer Shims

The improved boom-and-attachment design – featuring wear-resistant long-life pins, bushings and polymer shims – enhances attachment reliability and durability.



### Reinforced Upper and Lower Structure and Attachments


Hyundai's new buckets are reinforced with wear-resistant Hardox 400 steel for additional durability.



### High-Quality Hydraulic Hoses

Hyundai partners with the Gates Corporation to supply high-quality hydraulic hoses, which are three to four times more durable than other hoses commonly found in the industry.





Spacious cab with ergonomic design for maximum operator productivity, convenience and comfort.

\* Pictured with some optional features.

### **New Air Conditioning System**

The HX series features an enhanced-capacity air conditioning and heating system. The APTC auxiliary heat capacity is increased by 15 percent, providing a consistently comfortable operating environment, even in the coldest conditions. Additional venting improves airflow in all directions, including vents that can be directed to your operator's face, which is especially helpful for staying comfortable on hot days.



# GIVE YOUR OPERATORS THE EDGE

## Improved Instrument Panel for Easier Monitoring

The Hyundai HX series is designed with your operator in mind. A key feature of the new cab in each HX series excavator is the convenient clustering of electronic controls and monitoring functions, resulting in improved operator

accuracy and efficiency. The highly-advanced infotainment system, a product of Hyundai's comprehensive information technology capabilities, enables both productivity and convenience while working.



## Intelligent and Wide Cluster

The 8-inch interactive touchscreen display is 15-percent larger than that of the previous model. The centralized switches on the display allow the operator to check the urea level and the temperature outside the cab. The audio auxiliary function, air conditioner, heater integration, wiper, lamp, optional overload warning, travel, alarm and inclinorator functions also contribute to operator productivity.



## Wi-Fi Direct with Smart Phone (Miracast)

The Smart Terminal – Miracast system uses the wi-fi from your operator's smart phone to easily and conveniently enable features of the smart phone, such as navigating, surfing the web, watching videos and listening to music, for display on the 8-inch screen. (Currently available for Android phones only)



## New Audio System

The audio system includes AM/FM radio, a USB-based MP3 player, an integrated Bluetooth hands-free feature and a built-in microphone to allow for phone calls while at work and in transit. The audio system controls are located on the right side of the operator for convenient access.

# ADVANCED TECHNOLOGIES, EASY TO SERVICE, FUEL EFFICIENT

## Maximizing Profitability

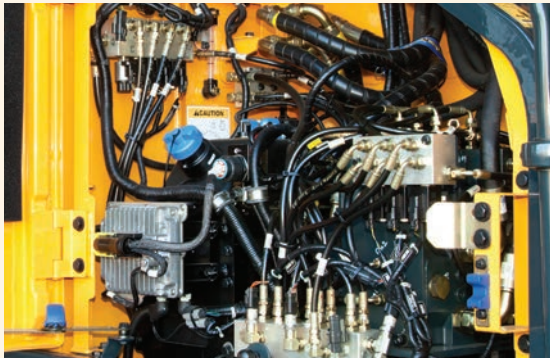
The Hyundai HX series compact-radius excavators are designed to maximize profitability through the application of advanced technologies, enhanced service features and improved efficiencies.

Serviceability enhancements include large wide-opening service doors, ground-level access to the fuel filter and convenient exterior access to the cab air filter.

## Promoting Effective Maintenance

One of Hyundai's most important technology enhancements is remote management capability, available through our exclusive Hi-Mate system, which saves time and money by promoting greater preventive maintenance to reduce equipment downtime.

Hyundai compact-radius excavators are designed to keep operating costs down. Tier 4 Final-compliant engines, a more efficient vertically stacked cooling design, electronic fan clutch, and hydraulic system innovations contribute to an overall fuel economy improvement of up to 10 percent.



### Easy Access to DEF/AdBlue® Supply System

The DEF/AdBlue® tank is installed next to the tool box. Its inlet is remotely located for easy access and convenient supply. A red lamp signal warns of overfill. The DEF/AdBlue® supply module is attached on the side of the fuel tank for easy maintenance and filter replacement.

Tier 4 Final engine technologies reduce both particulate matter (PM) and nitrous oxide (NOX) emissions by 90 percent, providing significant environmental benefits.



### Hi-mate Remote Management System

Hi-Mate, the proprietary Hyundai remote management system, is provided free of charge for three years with all new, full-sized Hyundai excavators. This GPS-based software system allows your equipment owners and service personnel to track and monitor Hyundai construction machines at any time and in any location, monitoring key machine components such as the engine, hydraulics and electrical system. Hi-Mate saves time and money by promoting greater preventive maintenance to reduce equipment downtime.

\* Operation of the system may be affected by the condition of telecommunication signal.



### Easy to Maintain

Hyundai's compact-radius excavators have a small footprint, but they feature large, wide-opening doors for easy, ground-level access to mechanical systems, filters, components and test ports. Enhanced serviceability means reduced downtime.

# BACKED BY HYUNDAI

## Built to Perform

Hyundai HX series compact-radius excavators, like all Hyundai equipment, are built to perform, day in and day out, to meet your toughest expectations and quality standards.

## Support

When you purchase a Hyundai machine, you know your investment is as solid as the steel on our buckets and booms. You can count on the Hyundai difference:

- Products packed with value – with more standard features on every machine
- Knowledgeable, trained and experienced dealer service personnel, backed by our solutions-focused field support team
- Industry-leading standard warranty of 3 years or 3,000 hours or 3,000 hours plus 5-year, 10,000-hour structural warranty, as well as the Hyundai Extend optional extended-warranty program
- Maintains an average 98-percent fill rate for parts orders submitted by our dealers on behalf of customers like you. Our warehouse in suburban Atlanta has more than \$30 million in inventory



## North American Dealer Network

Hyundai construction equipment is sold and serviced through a growing network of more than 70 of North America's top equipment dealerships, with more than 100 locations across the United States and Canada.



[www.hceamericas.com](http://www.hceamericas.com)

6100 Atlantic Blvd., Norcross, GA 30071

TEL (678) 823 7777 FAX (678) 823 7778

1050-EX-FB 8/2016