

Crawler Excavator Family

HX140AL | HX160AL | HX180AL | HX210AL | HX220AL | HX260AL | HX300AL
HX350AL | HX380AL | HX480AL | HX520AL | HX800AL | HX1000AL
HX220A_{LR} | HX300A_{LR} | HX130A_{LCR} | HX145A_{LCR} | HX235A_{LCR} | HX355A_{LCR}



*Photo may include optional equipment.

EVERYTHING YOU EXPECT FROM HYUNDAI AND MORE

The HX-A Series crawler excavators come with Hyundai's industry-leading warranties and automotive-style comfort and convenience features, backed by our expanding dealer network.



HX140AL

NET POWER
131 hp (98 kW)
at 2,200 rpm

OPERATING WEIGHT
33,576 lb (15,230 kg)

STANDARD BUCKET
36" | 0.80 yd³ (0.61 m³)



HX160AL

NET POWER
152 hp (113 kW)
at 2,200 rpm

OPERATING WEIGHT
39,010 lb (17,695 kg)

STANDARD BUCKET
36" | 0.94 yd³ (0.72 m³)



HX180AL

NET POWER
152 hp (113 kW) at 2,200 rpm

OPERATING WEIGHT
40,570 lb (18,400 kg)

STANDARD BUCKET
36" | 0.95 yd³ (0.73 m³)



HX210AL

NET POWER
170 hp (127 kW)
at 2,200 rpm

OPERATING WEIGHT
51,700 lb (23,451 kg)

STANDARD BUCKET
42" | 1.0 m³ (1.3 yd³)



HX220AL

NET POWER
170 hp (127 kW)
at 2,200 rpm

OPERATING WEIGHT
52,900 lb (23,995 kg)

STANDARD BUCKET
42" | 1.20 yd³ (0.92 m³)



HX140AL | HX160AL | HX180AL | HX210AL | HX220AL
HX260AL | HX300AL | HX350AL | HX380AL | HX480AL

Scan QR codes to download spec sheets for each model



HX260AL

NET POWER
227 hp (169 kW)
at 2,000 rpm

OPERATING WEIGHT
59,525 lb (27,000 kg)

STANDARD BUCKET
42" | 1.53 yd³ (1.17 m³)



HX300AL

NET POWER
255 hp (190 kW)
at 2,200 rpm

OPERATING WEIGHT
72,201 lb (32,750 kg)

STANDARD BUCKET
48" | 2.42 yd³ (1.85 m³)



HX350AL

NET POWER
304 hp (227 kW)
at 2,200 rpm

OPERATING WEIGHT
77,184 lb
(35,010 kg)

STANDARD BUCKET
56" | 1.88 yd³ (1.44 m³)



HX380AL

NET POWER
359 hp (268 kW)
at 2,100 rpm

OPERATING WEIGHT
88,053 lb (39,940 kg)

STANDARD BUCKET
56" | 2.12 yd³ (1.62 m³)



HX480AL

NET POWER
395 hp (295 kW)
at 2,100 rpm

OPERATING WEIGHT
111,752 lb
(50,690 kg)

STANDARD BUCKET
60" | 2.88 yd³ (2.2 m³)



EVERYTHING YOU EXPECT FROM HYUNDAI AND MORE

HX520AL



NET POWER
395 hp (295 kW) at 2,100 rpm

OPERATING WEIGHT
120,703 lb (54,750 kg)

STANDARD BUCKET
60" | 3.41 yd³ (2.6 m³)



Long Reach Excavators (LR) are used for tasks that require extended reach, like deep trenching, underwater digging.

HX220ALR



NET POWER
170 hp (127 kW)
at 2,200 rpm

OPERATING WEIGHT
56,040 lb (25,420 kg)

STANDARD BUCKET
0.68 yd³ (0.52 m³)



HX800AL



NET POWER
539 hp (402 kW)
at 2,000 rpm

OPERATING WEIGHT
180,999 lb (82,100 kg)

STANDARD BUCKET
5.5 yd³ (4.2 m³)



HX300ALR



NET POWER
255 hp (190 kW)
at 2,200 rpm

OPERATING WEIGHT
74,050 lb (33,590 kg)

STANDARD BUCKET
0.68 yd³ (0.52 m³)



HX1000AL



NET POWER
629 hp (469 kW)
at 2,000 rpm

OPERATING WEIGHT
221,344 lb (100,400 kg)

STANDARD BUCKET
7.06 yd³ (5.4 m³)



**HX520A_L | HX800A_L | HX1000A_L | HX220A_{LR} | HX300A_{LR}
HX130A_{LCR} | HX145A_{LCR} | HX235A_{LCR} | HX355A_{LCR}**

Compact-Radius Excavators (LCR) feature a compact tail swing design, ideal for working in confined spaces.

Scan QR codes to download spec sheets for each model

HX130A LCR



NET POWER
72 hp (54 kW) at 2,200 rpm

OPERATING WEIGHT
29,640 lb (13,455 kg)

STANDARD BUCKET
30" | 65 yd³ (0.5 m³)

HX145A LCR



NET POWER
131 hp (98 kW) at 2,200 rpm

OPERATING WEIGHT
34,020 lb (15,430 kg)

STANDARD BUCKET
36" | 0.80 yd³ (0.61 m³)

HX235A LCR



NET POWER
170 hp (127 kW) at 2,200 rpm

OPERATING WEIGHT
52,910 - 54,140 lb (24,000 - 24,560 kg)

STANDARD BUCKET
42" | 0.67 - 1.75 yd³ (0.51 - 1.34 m³)

HX355A LCR



NET POWER
270 hp (202 kW) at 1,800 rpm

OPERATING WEIGHT
78,483 - 79,807 lb (35,600 - 36,200 kg)

STANDARD BUCKET
42" | 0.67 - 1.75 yd³ (0.51 - 1.34 m³)

HIGH PRODUCTIVITY AND FUEL EFFICIENCY

HX-A Series is equipped with eco-friendly, high-performance engines that meet the Tier 4 emissions requirements.

MORE FUEL-EFFICIENCY
(Compared to HX220L at P mode)

Truck
Loading

20% 

Faster
Leveling

25% 



* Photo may include optional equipment.

Eco Report **NEW**

Reports the excavator's efficiency of operation and helps improve the operator's working habits.



Lifting Mode

This work mode improves fine operability and lift capability through RPM reduction, power boost activation and pump flow control.

Fuel Rate Information

Average fuel consumption rate is displayed to serve as a guide to economic operation.



Eco Gauge

Gauge level changes in accordance with engine working load, with color indicating fuel saving-operation status.



Automatic Engine Shutdown

Adjustable Automatic Engine Shutdown significantly reduces idle time, overall operating hours and fuel consumption.



TIER 4 FINAL CERTIFIED ENGINES

Hyundai Construction Equipment selects trusted engines, including Cummins, Perkins and Hyundai, to use in specific models, based on their size and applications.



2D Machine Guidance

Hyundai's 2D Machine Guidance provides real-time survey data on the machine's cluster display. 2D MG+ boosts productivity, reduces costs, and enhances jobsite safety.

It calculates the bucket tip position and displays it with animated graphics and alarms. A magnetic, removable laser catcher allows easy benchmark setup or updates. By reducing the need for ground workers to set stakes or check grades, 2D MG+ minimizes accident risks.



EPFC System (Electric Positive Flow Control) *

The advanced hydraulic system, featuring EPFC, maximizes fuel efficiency and enhances precision. Pump power adjusts precisely in response to lever movements and complex operations, ensuring smoother, more responsive control.

* Available on select models only.

ULTIMATE DURABILITY

The true value of the HX-A Series lies in its durability and high productivity. The robust upper and lower frame structure can endure external shock and heavy workloads. Attachment performance has been proven through rigorous field testing. No matter how tough the working environment is, you can always rely on the Hyundai HX-A Series.



* Photo may include optional equipment.



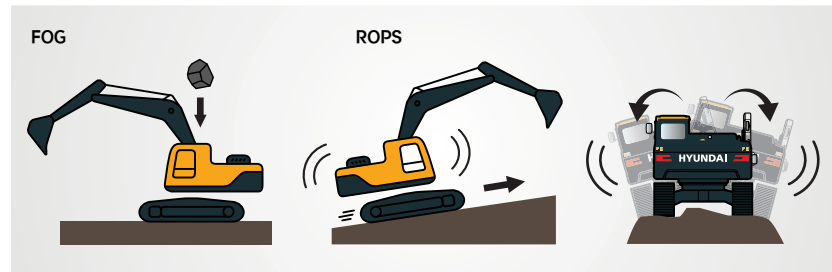
We ensure the best performance in tough working conditions with complete reliability. //

ROPS / FOG Cabin

Hyundai HX-A Series cabs incorporate integrally welded low-stress, high strength steel to meet ROPS and FOG certification.

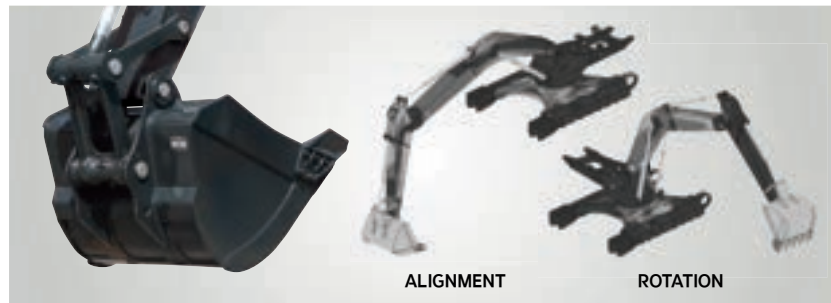
ROPS : Roll-Over Protective Structures ISO12117-2

FOG : Falling Object Guard, ISO10262 Level 2



Reinforced Durability of Upper and Lower Structure and Attachments

HX-A Series' upper and lower structure and attachments have undergone rigorous testing, including both virtual simulation and extensive road/field testing to ensure they exceed worksite demands. We have improved bucket wear resistance through the use of new, more durable materials.



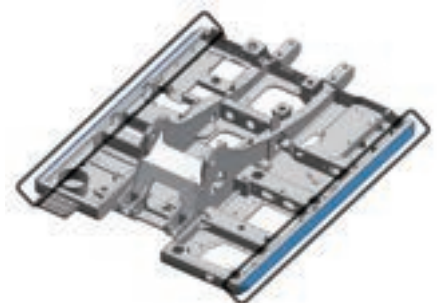
Durable Cooling Module


The HX-A Series features a durable cooling module that has passed stringent tests, ensuring high productivity in tough working environments.



Side Protector **OPTION**

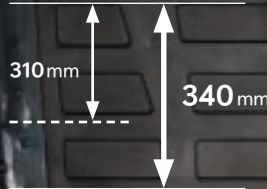
Protect the side frames during operation in confined spaces.





13%

CABIN SPACE FOR DRIVERS
INCREASED BY



EASY CONTROL AND COMFORTABLE OPERATION

Many electronic functions are concentrated in the most convenient spot for operators to improve work efficiency. The highly-advanced infotainment system, a product of Hyundai's intensive information technology development, enables both productivity and comfort while working! HX-A Series is designed with the operator in mind.

* Photo may include optional equipment.

Intelligent & Wide Cluster

The 8" touchscreen display is easy to see and easy to read. Centralized switches allow checking of fluid levels, outdoor temperature and more without leaving the cab.

One Pedal Straight Travel OPTION

One pedal straight travel is available for customers' convenience during operations requiring longer travel intervals or prolonged travel in conjunction with attachment use.



Proportional Auxiliary Hydraulic System OPTION

Proportional auxiliary hydraulics, activated by a switch, allows greater speed control during prolonged operation. The detent function lets the operator continue using two-way piping flow without the need to keep pressing the proportional control switch.

Jog Dial Module

The integrated jog dial module applies to the accelerator, remote air conditioner controller and operation of the cluster, allowing convenient operation. In the event of failure of the jog dial module, the emergency mode is activated on the cluster to ensure fail-safe function.



Key On Initial Work Mode

The operator can maintain the previously set attachment mode when starting.



Operators can adjust load sensitivity and set boom priority relative to the arm and swing. Load sensitivity is controlled across five levels, adjusting the initial flow rate for boom-up and arm-in movements according to attachment weight. Boom priority can be fine-tuned across 10 levels to optimize performance between the boom, arm, and swing functions.



OME (Owner Menu Editing)

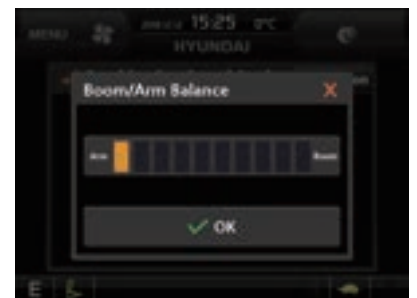
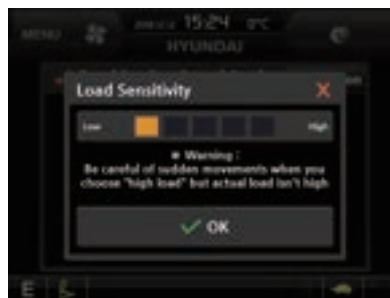
The machine owner can restrict operator access to certain functions. Through the menu, they can create a list of functions to lock or unlock. A password is required to modify these settings.



Load Sensitivity and Boom/Arm and Swing Priority

The operator can set load sensitivity levels and boom priority levels against arm and swing. There are 5 flow-rate levels for boom-up and arm-in operation, based on attachment weight, and there are 10 settings for boom priority against arm and swing.

Applies to EPFC Models Only (HX210A, HX220A, HX235A, HX260A).



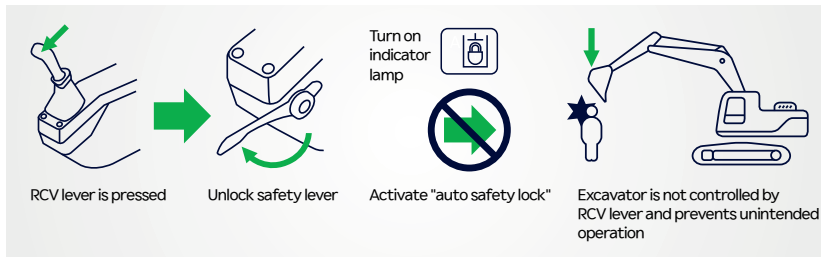


Advanced technology helps ensure worksite safety. //

HX-A Series excavators embody the the Hyundai spirit, showcasing the initiative, creativity and drive our engineers apply to develop technologies that help ensure safety and productivity on the job.

Auto Safety Lock

Engagement of the auto safety lock prevents unintended operation, ensuring the excavator is not controlled by the RCV lever. Activation of the auto safety lock is noted by an indicator lamp.

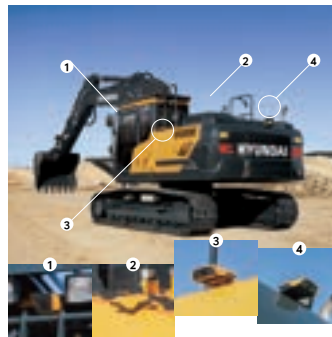


AAVM (All-Around View Monitoring) Camera System **OPTION**

An available option for HX-A Series excavators is Hyundai's state-of-the-art AAVM video camera system uses nine views, including a 3D bird's eye view and 2D/4CH view to provide a 360-degree field of vision, enhancing operator safety and preventing accidents. Operators can easily check the workplace in the front and rear and to the right and left.

IMOD (Intelligent Moving Object Detection)

IMOD alerts the operator when people or moving objects are detected within the range of operation -- 16 ft (5 m).



Seatbelt Warning Alarm

If the seatbelt is not buckled when the ignition key is turned, an alarm is triggered in intervals along with a continuous visual alert.

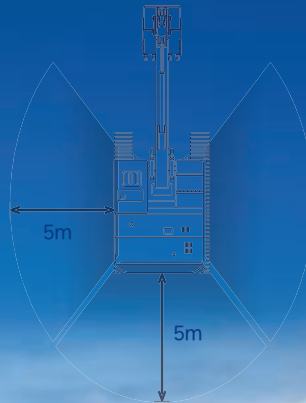
Cabin Suspension Mount

The suspension mounting of the HX-A Series cab uses a coil spring and damper to minimize vibration, providing a more comfortable operating space, which reduces operator fatigue while also adding to the productive work life of the machine.



THE ULTIMATE SAFE ENVIRONMENT

Jobsite safety is critical to workers and owners alike, and Hyundai HX-A Series excavators feature technologies that help ensure safe, productive operation.



▼
OBJECT
DETECTION

* Photo may include optional equipment.

SERVICEABILITY AND TELEMATICS

IoT / ICT / AI-based digital technology.

HiMATE - mobile (4G) -free for 5 years; Satellite - free for 2 years

Creating a smart construction site that maximizes connectivity, productivity, and safety for successful businesses.



* Photo may include optional equipment.

Hi MATE

IT'S CONVENIENT, EASY, VALUABLE AND FREE FOR FIVE YEARS

Hi MATE Hyundai's proprietary remote management system, utilizes GPS-satellite technology to provide customers with the highest level of service and product support available. Hi MATE enables users to remotely evaluate machine performance, access diagnostic information, and verify machine locations at the touch of a button.

WHAT ARE THE BENEFITS



Increase Productivity

Hi MATE helps you operate machines more efficiently. You can check the difference between total engine hours and actual working hours. See how productive your machines are and plan any required cost-saving solutions. Hi MATE offers working information such as working / idling hours and fuel consumption rates.



Convenient and Easy Monitoring

To monitor your machines, just log on to the Hi MATE website or mobile application. Hi MATE allows you to watch your machines whenever and wherever you are.

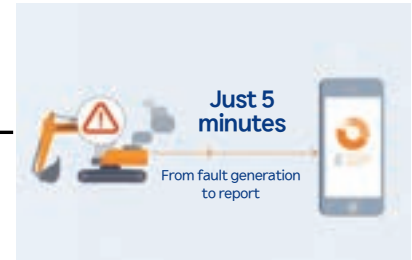
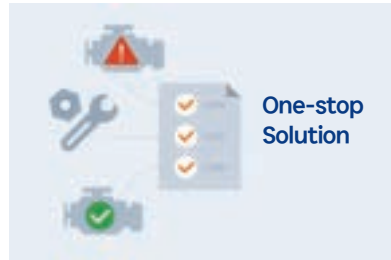


Security

Protect your machines from theft or unauthorized usage with Hi MATE. If the machine moves out of the geo-fence boundary, you will get alerts.

ECD (Engine Connected Diagnostics)

Hyundai engines are equipped with remote diagnostics, enabling service technicians to receive detailed reports. This ensures they can prepare in advance and arrive onsite with the right tools for efficient maintenance and repairs.



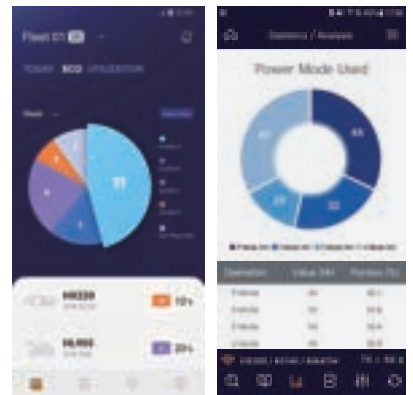
Urea Tank Cover **UPGRADE**

The fully opening urea tank cover allows operators to refill the tank directly and more easily.



Mobile Fleet App.

The new mobile app is designed for optimized fleet management, providing productivity and health insights through telematics technology. It helps fleet owners focus on the most critical equipment by analyzing economic usage, utilization, fault codes, and maintenance needs. The app automatically sorts equipment based on eco-index, utilization index, and fault code severity, ensuring urgent issues are highlighted immediately.



Hi MATE Fleet App

HCE-DT^{AIR} App

Crawler Excavator Family



BACKED BY HYUNDAI

Built to perform

HX-A Series crawler excavators, like all Hyundai equipment, are built to perform, day in and day out, to meet our customers' toughest expectations and quality standards.

North American dealer network

Hyundai construction equipment is sold and serviced through a growing network of more than 80 dealerships operating from nearly 200 locations across the United States and Canada.

Support

When you purchase a Hyundai machine you know your investment is as solid as the steel on our buckets and booms. You can count on the Hyundai difference.

- Products packed with value – with more standard features on every machine.
- Industry-leading full-machine standard warranty of 3 years or 3,000 hours, plus a 5-year, 10,000-hour structural warranty for main frame, boom and arms, and 5-year, 10,000-hour powertrain warranty on HX480 AL and HX520 AL large-frame excavators, with the option to add Hyundai Extend, an extended-warranty program.
- Knowledgeable, trained and experienced service personnel, backed by our solutions-focused field support team.
- Parts support, with an average 98-percent fill rate for parts orders submitted by our dealers on behalf of customers like you. Our warehouse in suburban Atlanta carries more than \$43 million in parts inventory.



6100 Atlantic Blvd., Norcross, GA 30071
TEL (678) 823-7777 FAX (678) 823-7778
na.HD-HyundaiCE.com



Printed in U.S.A.

building a
comfortable
tomorrow

HX_Family-1146-EX-FB 4/2025v18