

HYUNDAI

# HT38

With Tier 4 Final/EU Stage V Engine



\* Photo may include optional equipment.

**Engine Gross Power**  
115.3 HP (86 kW) / 2,400 rpm

**Rated operating capacity (35% of tipping load)**  
3,806 lb (1,727 kg)

**Operating Weight**  
12,785 lb (5,799 kg)

building a **comfortable** tomorrow



# WHAT'S NEW AND BEST

## EASY TO USE, WITH ALL-DAY COMFORT

- Spacious, cleaner and quieter cab
- Joystick and thumbwheel controls
- 8-inch Smart Touch display
- Adjustable, heated air-suspension seat

## THE BEST PRODUCTIVITY

- Top-of-the-line horsepower
- Impressive lift height
- Excellent lifting capacity
- Superior dump reach
- Lift arm float
- Torsion suspension

## PRODUCTIVITY AND VERSATILITY

- Fast maximum travel speed
- Hydraulic quick coupler (universal)
- Return-to-dig and attachment positioner
- Ride control
- High-flow hydraulics
- 14-pin electrical connector
- Bucket shake
- Auto self-leveling (up and down)

## EASE OF SERVICE, TELEMATICS

- One-piece, sealed, pressurized, tilt-up cab
- Hi MATE telematics
- Swing-open rear-access door
- Reversible fan

## SUPERIOR VISIBILITY

- Rearview mirror
- Rearview camera
- Optional 270° around view monitor (AVM) camera system with ultrasonic sensors
- Large polycarbonate door with minimized A-pillar width (corner pillar by the door)



# HT38





# THE BEST PRODUCTIVITY

The HT38 meets the toughest performance standards, delivering outstanding power, efficiency, and maneuverability for any job.







## Superior Horsepower

One of the most powerful machines in its class, the HT38 gives you more lifting capacity and pushing power. The HYUNDAI engine, which is also found in our dozers, is crucial for minimizing downtime, reducing maintenance costs and ensuring consistent performance in demanding work conditions.

## Two-speed Travel

The two-speed travel feature allows the compact track loader to operate at the higher speed for traveling longer distances or quickly moving between jobsites, and at the lower speed for stabilizing the machine during more precise and controlled movements, especially in challenging conditions.

## Creep Control

With its slow, intentional movements, creep control enhances the compact track loader's maneuverability and precision, affording you better control while operating at high rpms. This feature can be easily activated from the left-hand joystick.



## Ride Control

Ride control reduces shocks and vibrations, enhancing stability for the bucket and minimizing spillage when the compact track loader navigates rough terrain while carrying full loads.

## Additional Counterweight

An optional 300-lb (136-kg) additional counterweight further improves the machine's lifting and hauling capacity while providing better traction on challenging surfaces.





# Hydraulics Power Your Productivity



## Continuous Hydraulic Flow

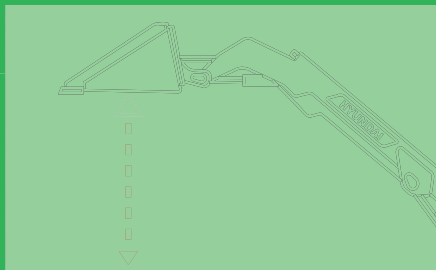
This feature provides a constant supply of hydraulic power to attachments, which contributes to smoother operation, with reduced jerky movements.

## Auxiliary High-Flow Piping

The auxiliary high-flow piping allows higher volume of hydraulic fluid to pass through the system, providing more power and efficiency for hydraulic attachments.

## EH Electric-over-hydraulic Controls

Electric-over-hydraulic controls provide better maneuverability and responsiveness by offering smoother, more precise control over the machine's movements, especially when grading or hauling.



## Vertical Lift Arm

The HT38 offers impressive lift and dumping capabilities, especially when compared to machines with radial lift arms. Its vertical lift configuration allows the compact track loader to extend its forward reach, making it easier to deposit materials into high-sided trucks or other elevated locations.

## Bucket Shake

The bucket shake feature helps remove materials stuck to the bucket or attachment, saving you time spent manually cleaning the machine.

## Lift Arm Float

The lift arm float feature enables attachments to naturally "float" with the terrain, automatically accounting for raised ground.

## Hydraulic Quick Coupler

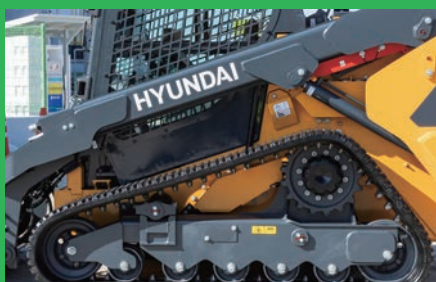
The universal hydraulic quick coupler enables fast and tool-free attachment changes to save you time and energy, especially when switching between multiple attachments on one job site.

## Auto Self-leveling (Up and Down)

Ideal for pallet applications, self-leveling helps maintain safety and stability by automatically adjusting the attachment or bucket to remain level as the arms are raised or lowered.

## Auto Return-to-dig and Attachment Positioner

The auto return-to-dig feature automatically returns the arms to the lowered position, saving you time while delivering a more consistent digging depth. The attachment positioner allows the operator to save the angle of the attachment and can automatically return the attachment to the preset angle with the push of a button.



## Torsion Suspension

The standard torsion suspension system helps absorb shocks and vibrations over rough terrain, resulting in a smoother ride compared to traditional fixed-frame machines.





# POWERFUL VERSATILITY

The true strength of the HT38 shines on demanding jobsites. Its standard hydraulic quick coupler and upgraded auxiliary hydraulics ensure fast, effortless attachment changes, keeping you productive, even in tight spaces.





# RELIABILITY

We designed our compact track loader with your productivity in mind, ensuring efficiency and ease of use on every worksite.







### Flange Idlers

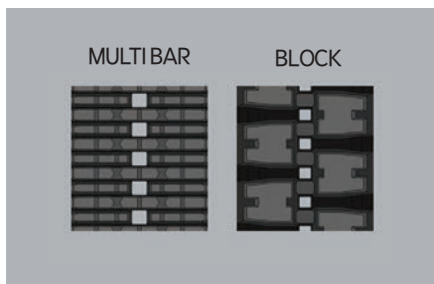
Standard front and rear triple-flange idlers are ideal for forestry use or along hillsides when mulching or mowing because they distribute the load more evenly across the tracks. This helps increase stability on slopes and rough or uneven terrain. Standard front dual- and rear single-flange idlers are designed for the flat, smoother terrain of developed construction sites.

The flange idlers are designed to guide and align the tracks, ensuring that they remain properly positioned on the undercarriage. You can select from two options based on your application.



### High-flow Hydraulics

The high-flow hydraulics provide an even stronger supply of power to hydraulic attachments for steadier, smoother operation.



### Two Track Options

Two track patterns, each available in a wide or narrow option, give you the proper traction for your jobsite's terrain.



### Multi-bar

The standard wide multi-bar tracks offer increased contact with the surface, providing more driving efficiency and superior traction.



### Block

The optional block pattern is designed for increased durability on challenging terrain, such as rock, gravel or uneven ground.



# OPERATOR COMFORT

Comfort and control are key to operator performance and worksite safety. With an ergonomic cab, intuitive joystick controls, air-suspension seat, and a roof sight panel, the HT38 keeps operators productive and at ease.







### Rearview Camera

The rearview (backup) camera provides an additional view so you can easily see behind the machine.



### Around View Monitor (AVM)

Camera System With Ultrasonic Sensors

The optional around view monitor camera system with ultrasonic sensors displays a 270° view of the machine's surroundings for greater confidence when operating the machine in tight work areas.

Ultrasonic sensors further enhance safety by alerting you of nearby objects as you back up the machine.



### Roof Sight Panel

The roof sight panel gives you a clear view of what's overhead, increasing visibility when working with elevated loads or in situations where a clear line of sight is crucial.

### Adjustable Rearview Mirror

The adjustable rearview mirror helps you easily see behind the machine for improved safety and performance.



### A Spacious, Comfortable Cab

With its large frame, the three-foot-wide interior of the HT38 compact track loader puts you in comfortable command of the job. It starts as soon as you enter through the ample polycarbonate swing-out door. The large door with narrower A-pillar width helps you clearly see the terrain. The pressurized cab reduces dust and lowers noise levels.

An 8-inch Smart Touch display offers an intuitive interface. Joystick and thumb wheel sensitivity give you precise control in tight spaces. The heat and AC system, cup holder, 12-volt charging, and radio and Bluetooth® wireless technology give you a comfortable working environment year-round.

### Adjustable, Heated Air-suspension Seat

This feature offers superior comfort compared to traditional seats. The air-suspension system helps absorb shocks and vibrations, reducing the impact of bumps and rough terrain.

Air-filled cushions adjust to your weight and movements, providing a smoother and more comfortable ride, especially over uneven terrain.



### LED Work Lamps — 4 Standard (2 Front, 2 Rear)

LED work lamps improve visibility during low-light or nighttime operations. Crucial for maintaining a safe and productive work environment, the LED front and rear work lamps reduce your risk of accidents and improve overall jobsite safety.

### Travel Alarm

The standard travel alarm alerts others on the worksite when the compact track loader is working, for added awareness and safety.

### Master ON/OFF Switch

The master ON/OFF switch offers one-touch control in the event that you need to quickly power the machine off.



# SERVICEABILITY AND TECHNOLOGY

With digital technologies and worksite connectivity, the telematics system on the HT38, as with all Hyundai equipment, allows you to manage and optimize the operation of your equipment.





# Hi MATE

## CONVENIENT, EASY AND VALUABLE

Access to the Hi MATE mobile app, HD Hyundai's proprietary GPS-based remote management system, is free for five years on the HT38 compact track loader. Hi MATE enables users to remotely evaluate machine performance, access diagnostic and maintenance schedules and records, and verify machine locations at the touch of a button.

## BENEFITS



### Increased Productivity

With Hi MATE, you can quickly view critical information such as working hours vs. idling hours, service intervals, machine location and performance data that can help you boost productivity for your fleet.



### Convenient and Easy Monitoring

You can log in to the Hi MATE mobile application to check on your machines whenever and wherever you are.



### Security

Hi MATE helps you protect your machines from theft or unauthorized use by alerting you if a machine moves outside the geo-fence boundaries you set.

## Attachments

Angle Broom > Skeleton Grapple >  
Open-front Rotary Brush Cutter > Auger >  
Large-capacity Root Grapple > Closed-front >  
Power Rake > Low-profile Dirt Bucket >  
Snow Blower > Hi-vis Rail Pallet Fork >  
Utility Bucket > Snow/Light Material Bucket >  
Scrap Grapple > Multi-purpose Bucket >  
Snow Pusher

## Serviceability



### Reversible Fan

The reversible fan protects against dust and debris. This keeps the compact track loader's engine cleaner and cooler to help extend the life of your machine.

### Radiator Screen

The radiator screen prevents debris, such as dirt, leaves or larger particles, from entering the radiator to reduce the risk of the engine overheating.

### Tilt-up Cooling Module

The tilt-up cooling module enables easier cleaning of the cooling system to maximize airflow.

### 110 V Block Heater

The optional 110V block heater warms the engine block and fluids for easier starts in extremely cold temperatures.

### PowerCore Air Filter

The PowerCore™ air filter more effectively traps and removes contaminants, such as dust, dirt and debris to help prolong the engine's lifespan.

### One-piece Cab

The one-piece, sealed and pressurized cab design minimizes the number of joints and seams, resulting in a more robust and durable cab that can withstand heavy-duty applications.





# SPECIFICATIONS

## ENGINE

Make	HYUNDAI
Model	D34
Emissions Certification	EPA Tier 4 Final/EU Stage V
Number of cylinders	4
Rated power, gross (hp per SAE J1995)	115.3 hp (86 kW) @ 2,400 rpm
Rated power, net (hp per SAE J1349)	102.6 hp (76.5 kW) @ 2,400 rpm
Maximum torque, gross (SAE J1995)	339.2 lbf·ft (46.9 kgf·m) @ 1,400 rpm
Displacement	208 in <sup>3</sup> (3.4 L)
Bore and stroke	3.86 in x 4.45 in (98 mm x 113 mm)
Starter	12 V, 4.5 hp (3.3 kW)
Battery	12 V, 150 AH
Asperation	Turbocharged
Alternator	12 V, 140 amp
Air filter	PowerCore
Aftertreatment	DOC, SCR (no DPF)

## OPERATING SPECIFICATION

Operating weight	12,785 lb (5,799 kg)
Breakout force (bucket)	6,649.1 lbf (3,016 kgf)
Breakout force (lift arm)	6,761.6 lbf (3,067 kgf)
Tractive force	45.6 lbf (27.0 kN)
Lift arm path	Vertical

### RATED OPERATING CAPACITY\*

35% tipping load	3,806 lb (1,727 kg)
Tipping load	10,875.4 lb (4,933 kg)

\*With optional 4,000 lb (1,814 kg) counterweight

## CABIN

ROPS	ISO1347:2008
FOPS	ISO3449:2005, Level1

## UNDERCARRIAGE

Track width	15.7"(400 mm)/17.7"(450 mm)
Ground pressure	5.7 psi (0.39 bar) 5.1 psi (0.35 bar)
No. of track roller (per side)	5
Travel speed (2-speed) low	6.1 mph (9.8 km/h)
Travel speed (2-speed) high	9.2 mph (14.8 km/h)
Track Tension Type	Grease
Front idler	Double (Std.) / Triple (Opt.)
Rear idler	Single (Std.) / Triple (Opt.)

## HYDRAULIC SYSTEM

### HYDRAULIC FLOW - BASIC

Hydraulic pressure	3,336 psi (23,000 kPa)
Hydraulic flow	22.7 gpm (86 L/min)

### HYDRAULIC FLOW - HIGH FLOW

Hydraulic pressure	4,061 psi (28,000 kPa)
Hydraulic flow	40 gpm (151.2 L/min)

## CAPACITY

Fuel tank	29.0 gal (110 L)
DEF tank	4.0 gal (15 L)
Cooling system (radiator capacity)	3.7 gal (14 L)
Engine oil	3.9 gal (14.6 L)
Hydraulic tank	10.6 gal (40 L)
Hydraulic system	19.2 gal (72.7 L)

## SOUND

Inside cab (ISO 6396:2008)	75 dB(A)
Outside cab (EU Directive 2000/14/EC)	101 dB(A)

# EQUIPMENT

## STANDARD EQUIPMENT

- Enclosed Cab (ROPS/FOPS)
- Polycarbonate Front Door
- Rearview Mirror
- Air Conditioner and Heater
- High-visibility 2" Retractable Seat Belt
- Heated Air-suspension Seat
- 12V Electric Outlet / USB Outlet / Cup Holder
- 8" Touch-screen Monitor
- Integrated Bluetooth and Radio
- Rearview Camera
- Accelerator / Decelerator Foot Throttle
- Interior Cab Light / Courtesy Light
- Horn / Backup Alarm
- Working Lamp (Front 2 / Rear 2)
- Telematics (Hi MATE)
- Hydraulic Quick Coupler
- Pattern Change (ISO, H)
- 14-pin Coupler for Attachments
- Boom Float Function
- Ride Control
- Creep Control
- Torsion Suspension System
- Two-speed Travel
- Multi-bar Pattern Wide Track 17.7"(450 mm)

- Smart Assist Features
  - Auto Self-leveling (Up and Down)
  - Bucket Shake
  - Attachment Positioner
  - Auto Return-to-dig
  - Lift Arm End-damping
- Reversible Fan
- Triple-flange Idler
- High-flow Hydraulics

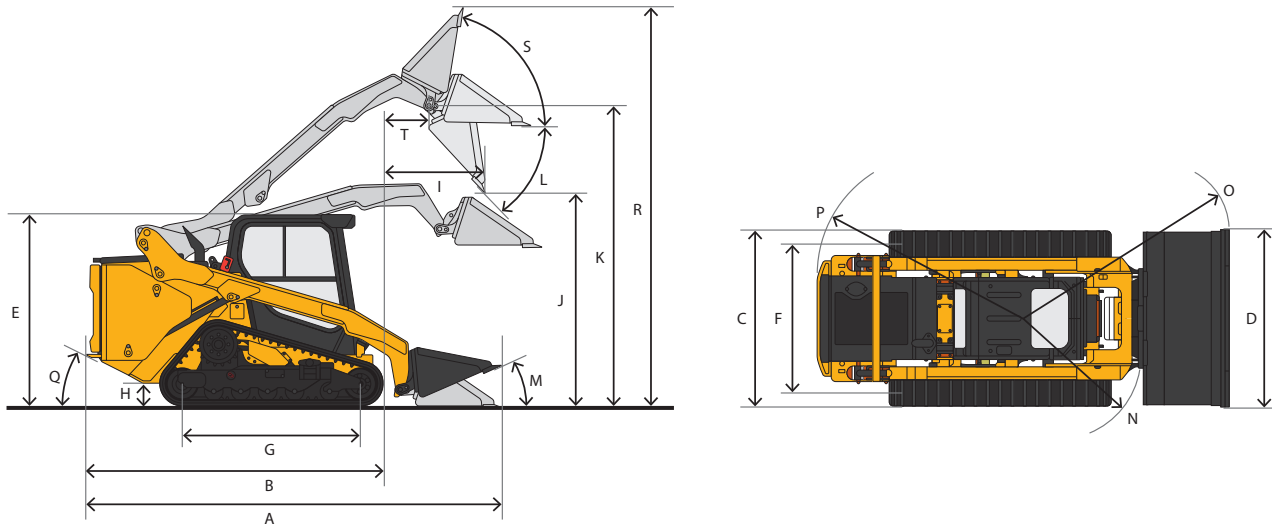
## OPTIONAL EQUIPMENT

- Around-view Camera with Ultrasonic Sensor
- 300 lb (136 kg) Additional Counterweight
- Beacon Lamp
- Block Heater(110V)
- Front Dual Rear Single-flange Idler
- And Much More



# DIMENSIONS & SPECIFICATIONS

## DIMENSIONS



Unit : mm (ft/in)

DIMENSIONS		HT38
A	Length w/bucket on ground	165.7" (4,210 mm)
B	Length w/o bucket	132.8" (3,372 mm)
C	Vehicle width	15.7 in 400 mm shoe
		17.7 in 450 mm shoe
D	Width with bucket	80" (2,032 mm)
E	Height to top of cab	84.0" (2,133 mm)
F	Track tread	61.1" (1,551 mm)
G	Length of track on ground	70.0" (1,767 mm)
H	Ground clearance	9.7" (247 mm)
I	Reach at max. lift and dump	46.3" (1,175 mm)
J	Height at max. lift and dump	96.7" (2,457 mm)
K	Hinge pin height at max. lift	129.1" (3,280 mm)
L	Max. dump angle	40.8°
M	Rollback angle on ground	25°
N	Turning radius from center - coupler	62.3" (1,583 mm)
O	Turning radius from center - bucket	99.9" (2,537 mm)
P	Turning radius from center - machine rear	75.7" (1,922 mm)
Q	Rear departure angle	31.6°
R	Max. overall height	169.4" (4,304 mm)
S	Rack back angle at max height	85.9°
T	Bucket pin reach at max lift	20.1" (510 mm)

NOTE: Where applicable, dimensions are in accordance with Society of Automotive Engineers (SAE) and ISO standards. Specifications and design are subject to change without notice. Pictures of Hyundai compact track loaders may show other than standard equipment. All dimensions are shown in inches. Respective metric dimensions are enclosed by parentheses. Rounding may impact specifications. Hyundai equipment is manufactured with a Quality Management System that is in compliance with ISO 9001:2008. All dimensions are given for Hyundai compact track loaders equipped with 15.7-inch (400 mm) block rubber tracks.



# Easy to Own, Easy to Operate



## BACKED BY HYUNDAI

### Built to perform

The HT38, like all Hyundai equipment, is built to perform, day in and day out, to meet our customers' toughest expectations and quality standards.

### North American dealer network

Hyundai construction equipment is sold and serviced through a growing network of over 80 dealerships operating from nearly 200 locations across the United States and Canada.

### Support

When you purchase a Hyundai machine you know your investment is as solid as the steel on our buckets and booms. You can count on the Hyundai difference.

- Products packed with value – with more standard features on every machine.
- Industry-leading standard warranty of 3 years or 3,000 hours, plus a 5-year, 10,000-hour structural warranty, with the option to add Hyundai Extend, an extended-warranty program.
- Knowledgeable, trained and experienced service personnel, backed by our solutions-focused field support team.
- Parts support from our warehouses in suburban Atlanta and Mississauga, Ontario, which together carry more than \$48 million parts in inventory.

# HYUNDAI

6100 Atlantic Blvd., Norcross, GA 30071  
TEL (678) 823-7777 FAX (678) 823-7778  
na.HD-HyundaiCE.com



building a  
comfortable  
tomorrow

HT38-CL-SP 9/2025v12