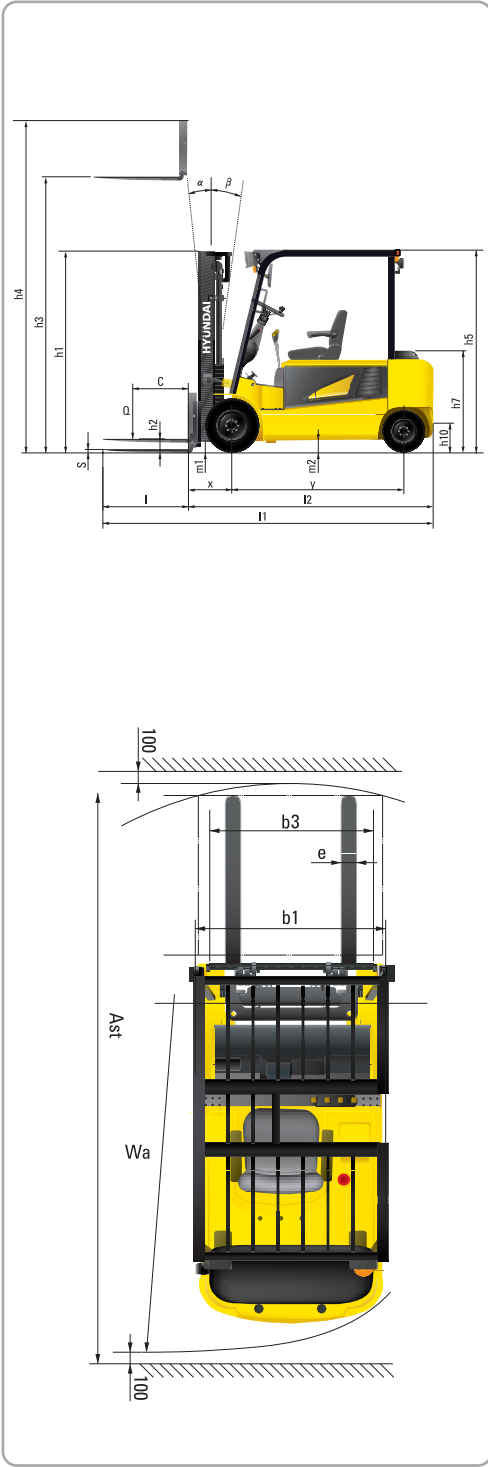


Dimension



Specification

Identification		HYUNDAI			
1. 1	Manufacturer				
1. 2	Manufacturer's type designation	35B-7	40B-7	45B-7	50B-7
1. 3	Drive : electric (battery or mains) ,diesel , petrol ,fuel gas, manual	Electric	Electric	Electric	Electric
1. 4	Type of operation : hand, pedestrian, standing, seated, order - picker	Seated	Seated	Seated	Seated
1. 5	Load capacity / rated load	Q lb	8,000	9,000	9,900
1. 6	Load center distance	c in	24	24	24
1. 8	Load distance, center of drive axle to fork	x in	21.1	21.1	21.3
1. 9	Wheelbase	y in	73.0	78.7	78.7
Weights					
2. 1	Service weight	lb	14,143	14,672	15,476
2. 2	Axle loading, loaded front / rear	lb	18,997 / 2,146	20,321 / 2,351	21,905 / 2,571
2. 3	Axle loading , unloaded front / rear		7,672 / 6,471	7,737 / 6,935	7,748 / 7,728
Wheels, Chassis					
3. 1	Tires : solid rubber(VI), superelastic(SE), pneumatic(P), polyurethane(PE)	SE, P	SE, P	SE, P	SE, P
3. 2	Tires size, front(φ x width)	250-15	250-15	250-15	250-15
3. 3	Tires size, rear(φ x width )	21 x 8 - 9	21 x 8 - 9	21 x 8 - 9	21 x 8 - 9
3. 5	Wheels, number front(rear(x = driven wheels)	2 x / 2	2 x / 2	2 x / 2	2 x / 2
3. 6	Track width, front	in	44.9	44.9	44.9
3. 7	Track width, rear	in	42.9	42.9	42.9
Basic Dimensions					
4. 1	Mast / fork carriage tilt forward / backward	degrees	6 / 10	6 / 10	6 / 10
4. 2	Lowered mast height	h1 in	87.6	87.6	87.8
4. 3	Free lift	h2 in	4.72	4.72	4.72
4. 4	Lift height	h3 in	118.1	118.1	114.2
4. 5	Extended mast height	h4 in	166.3	166.3	166.2
4. 7	Overhead load guard (cab) height	h5 in	87.8	91.3	91.3
4. 8	Seat height / Standing height	h7 in	45.9	45.9	45.9
4. 12	Coupling height	h10 in	18.1	18.1	18.1
4. 19	Overall length	l1 in	151.5	157.2	159.1
4. 20	Length to face of forks	l2 in	109.3	115.0	116.9
4. 21	Overall width	b1 in	53.9	53.9	56.1
4. 22	Fork dimensions	s / e / l in	1.97 x 4.8 x 42.1	1.97 x 4.8 x 42.1	1.97 x 4.8 x 42.1
4. 23	Fork carriage ISO 2328, class / type A, B	III / A	III / A	III / A	III / A
4. 24	Fork - carriage width	b3 in	51.2	51.2	51.2
4. 31	Ground clearance, loaded, under mast	m1 in	6.3	6.3	6.5
4. 32	Ground clearance, centre of wheelbase	m2 in	6.3	6.3	6.14
4. 33	Aisle width for pallets 1,000 x 1,200 crossways	Ast in	165.2	171.3	173.0
4. 34	Aisle width for pallets 800 x 1,200 length ways	Ast in	157.3	163.4	165.2
4. 35	Turning radius	Wa in	96.9	103.0	104.7
4. 36	Smallest pivot point distance	in	-	-	-
Performance Data					
5. 1	Travel speed, loaded / unloaded (80V)	mph	10.6 / 11.2	10.6 / 11.2	10.6 / 11.2
5. 2	Lift speed, loaded / unloaded (80V)	fpm	74.8 / 98.4	74.8 / 98.4	65.0 / 98.4
5. 3	Lowering speed, loaded / unloaded	fpm	108 / 102	108 / 102	108 / 102
5. 5	Drawbar pull, loaded / unloaded S2 60 min	N	-	-	-
5. 6	Max. drawbar pull, loaded / unloaded S2 5 min	N	28,931 / 29,122	28,185 / 29,075	28,662 / 29,003
5. 7	Gradient performance, loaded / unloaded S2 30 min	%	-	-	-
5. 8	Max. gradient performance, loaded / unloaded S2 5 min	%	30 / 26	28 / 26	26 / 24
5. 9	Acceleration time, loaded / unloaded	-	-	-	-
5. 10	Service brake	Hyd.	Hyd.	Hyd.	Hyd.
E - Motor					
6. 1	Drive motor rating S2 60 min (80V)	kW	8.1 x 2	8.1 x 2	8.1 x 2
6. 2	Pump motor rating at S3 - 15 % (80V)	kW	23.8	23.8	23.8
6. 4	Battery voltage, nominal capacity K5 (80V)	Ah	600	700	700
6. 5	Battery weight (min)	lb	3,925	4,620	4,620
	Battery dimensions (L/ W / H)	in	40.35 / 33.54 / 30.87	40.35 / 39.21 / 30.87	40.35 / 39.21 / 30.87
6. 6	Type of drive control	AC	AC	AC	AC



■ Some of the photos may include optional equipment.

North America Only

FORKLIFT TRUCKS Environmentally - Friendly

35/40/45/50B-7 AC

**HYUNDAI | FORKLIFT**  
HEAVY INDUSTRIES CO.,LTD.

Head Office(Sales Office)  
14th FL., HYUNDAI BLDG. 140-2, KYE-DONG, JONGNO-GU, SEOUL, KOREA 110-793  
Tel (82) (2) 746-4609,4638 Fax (82) (2) 746-7444-7445

Americas Operation: Hyundai Construction Equipment Americas, Inc.  
6100 ATLANTIC BOULEVARD NORCROSS GA 30071 U.S.A TEL: (1)847-678-823-7802 FAX: (1)847-678-823-7778

Europe Operation : Hyundai Heavy Industries Europe N.V.  
VOSSENDAAL 11, 2440 GEEL, BELGIUM Tel (32) 14-56-2200 Fax (32) 14-59-3405

PLEASE CONTACT

www.hyundai-ce.com

2011. 12 Rev.1

**HYUNDAI**  
HEAVY INDUSTRIES CO.,LTD.

We build a better future



# New Criterion of Forklift Trucks

Hyundai introduces a new line of 7-series battery forklift trucks. Excellent power and performance makes your business more profitable.



■ Some of the photos may include optional equipment.



# The New AC Control B Series

Designed with a durable frame and built to offer excellent stability and a smooth ride, AC Control B Series trucks are real workhorses.



■ Some of the photos may include optional equipment.

## High Technology ZAPI Controller Eliminate “almost noiseless”

The efficient, 8Khz(high frequency) ZAPI controller provides smooth operation and protection for low & high voltage, overheating and fault recording.

### Features

- Regeneration : Direction change, Deceleration, Braking
- The new AC motors offers a of 10% greater efficiency than traditional DC motors
- Various performance models are available to maximize efficiency and equipped to work in all types of operations
- Enhanced Efficiency
  - H (High) Mode, N (Normal) Mode, E (Economic) Mode
- Turtle Mode : 10km/h



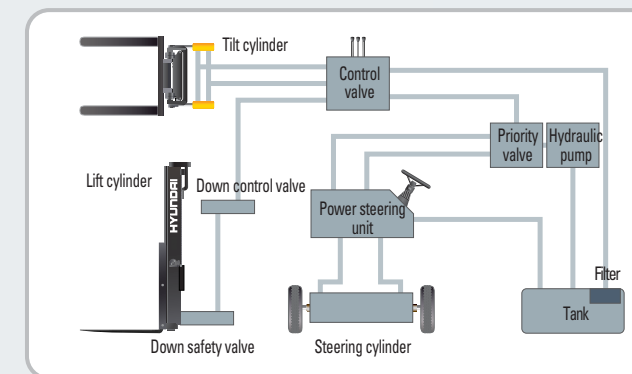
## Superior Power & Optimal Performance

Efficient, smooth running and ergonomically designed AC control series are built to meet you needs.



### Fork Safety Features

When the forks are being lowered, a down-control valve maintains the controlled speed. The down-safety valve prevents forks from dropping down in case of sudden damage of hydraulic line.



### State-of-the-art hydraulic System

The latest large-capacity hydraulic system reacts quickly during operation, and a low noise control valve increases both efficiency and durability.

### Anti-Rollback System, Faster Travel Speed & Gradeability

ZAPI's anti-rollback system provides safe ramp operation plus exceptional ramp start capabilities.

The powerful high-output motors provide greater acceleration, better gradeability and faster travel speed on any tough terrain or slope.

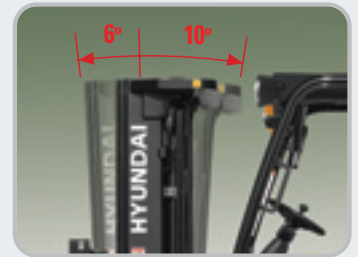


### Travel Speed (MAX)

Model	mph
35B-7	11.1
40B-7	11.1
45B-7	11.1
50B-7	11.1

### Gradeability (MAX)

Model	%
35B-7	30
40B-7	28
45B-7	26
50B-7	24



### Increased Mast tilting Angle

Utilizing the mast tilting angle of 6 degrees forward and 10 degrees backward, the operator can rapidly perform loading and unloading jobs safely.



### Wet Disc Brake System

The wet disc brake system is virtually maintenance free and is enclosed to protect from dust and water.



### Fully Hydrostatic Power Steering

A hydraulic steering system ensures smooth & precise steering which prevents kick-back.



### OPSS (Operator Presence Sensing System)

Control of mast tilting, lifting and lowering is not possible through operation of the appropriate control when the operator is not in the seat



## Comfortable Operation

A design based on human engineering relieves fatigue and increases operator's efficiency.



### Adjustable Steering Wheel

Steering wheel can be adjusted by a lever on the right-hand side for the most comfortable operator position.



### Easy Control Direction Lever

Finger tip control of forward and reverse lever allows the operator to remain in control of equipment.



### Multi-Functional Switch

Integrated multi-functional switch lever enables the driver to operate lights and horn conveniently.



### Prompt Response of Operating Control Levers

Only minimal operator's effort is required for precise, safe and productive control.



### High visibility for safe operation

The operator is able to work with increased safety and accuracy due to a wider view.



### Perfect Compartment Fit For Any Operator

An ergonomically designed operator's compartment enables the driver to select the most comfortable working position for increased productivity.



### Optimum Pedal Position & Non-slip Mat

Based on human engineering, the accelerator and brake pedals are optimally positioned for convenience while operating the equipment.

### Easily Adjustable Suspension Seat

An attractive and adjustable seat, based on a human engineering design, provides greater comfort, safety and durability.

■ Options : Seat belt, Arm rest, Hip restraint



### AC Control System Features

- \_Excellent Control Ability
  - Various performance modes to meet all working conditions
  - Slow rolling on ramp & ramp start
- \_Enhanced motor efficiency & Excellent regeneration

■ Some of the photos may include optional equipment.



### Self - diagnostic LCD Monitor

The LCD monitor has a back-light system to provide a clear view of the system's operation in all environments. The monitor provides information about operation error, system fault, battery level, hour meter and selected performance mode. Other various functions include items such as self diagnostics and password activation. These features are can be accessed without the need of a laptop or handset.

### Keyboard Buttons / Performance mode

Operator can select performance mode easily according to working condition.

### Console Box & Cup Holder

Additional storage spaces are located inside the operating space for operator's convenience.





## High Durability & Simple Arrangement

An ideal arrangement of component parts ensures easy access and convenience for maintenance.



■ Some of the photos may include optional equipment.



### Strong Overhead Guard

The safety overhead guard exceeds EEC and ANSI regulations and protects the operator during hazardous work.



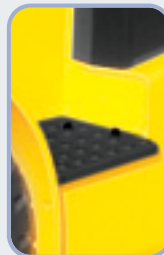
### Parking Brake

Ratchet type parking brake requires less effort from the operator to set.



### Hand Grip & Large Footboard

Wide "open" step and large hand grip offer convenience and safety when entering and exiting the truck.

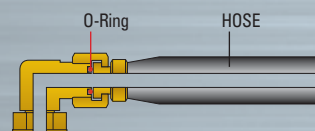


### Rear Safety Lamp

Rear combination lamps with turn signal lamps, tail lamp and brake lights are positioned for high visibility to ensure safety.



### Battery Locking System



### ORFS (O-Ring Face Seal)

ORFS type hose prevents the leaking of hydraulic oil.

### High quality AC motors

Enclosed motors prolong durability. No brush and no connector. (No arc and no spark)



## Easy Maintenance & Serviceability

Battery change is easy with a swing-up compartment and a slotted overhead guard. Opening and closing of the battery cover is made easy with a gas-spring assisted cylinder.

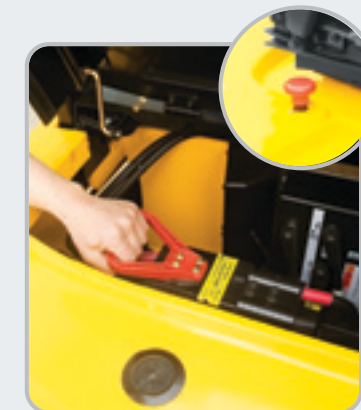


### Easy battery replacement

Battery change is easy with swing-up compartment and slotted overhead guard. Opening and closing of battery cover is made easy with a gas-spring assist cylinder.



### Hydraulic motor



### Battery Disconnect Lever / Switch



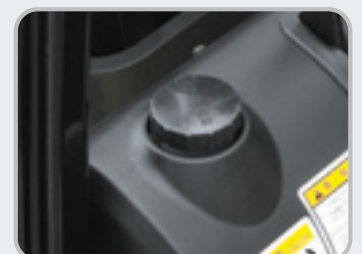
### A concentrated fuse box for easy inspection



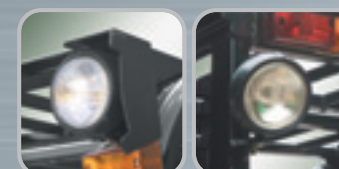
### Oil Tank Port



### Steering Sensor



### Easy to Check Brake Oil Level



### High Visibility Headlights & Rear Work Light



### DC-DC Converter

DC-DC converter exceeds UL & CE requirements to prevent short circuit, overload and reverse polarity



Mast Specification (35/40/45B-7)

Mast Type		Overall Height (Lowered) (mm)	Maximum Fork Height (mm)	Free Lift(mm)		Tilt Angle (deg) Fwd / Bwd	Load Capacity without side shift at (500mm LC) (kg)			Load Capacity with side shift at (500mmLC) (kg)			Truck Weight (Unloaded) (kg)			
				With Backrest	Without Backrest		Single Tire			Double Tire			Single Tire		Double Tire	
				35/40/45B-7	35/40/45B-7		35B-7	40B-7	45B-7	35B-7	40B-7	45B-7	35B-7	40B-7	45B-7	45B-7
2-Stage limited free lift	V270	81.7	107.1	4.7	4.7	6 / 10	7700	8800	9900	7700	8800	9900	7700	8800	9900	14086
	* V300	87.6	118.9	4.7	4.7	6 / 10	7700	8800	9900	7700	8800	9900	7700	8800	9900	14086
	V330	93.5	130.7	4.7	4.7	6 / 10	7700	8800	9900	7700	8800	9900	7700	8800	9900	14086
	V350	99.4	138.6	4.7	4.7	6 / 10	7700	8800	9900	7700	8800	9900	7700	8800	9900	14086
	V370	103.3	146.5	4.7	4.7	6 / 10	7700	8800	9900	7700	8800	9900	7700	8800	9900	14086
	V400	111.6	158.3	4.7	4.7	6 / 10	7700	8800	9900	7700	8800	9900	7700	8800	9900	14086
	V450	121.5	178.0	4.7	4.7	6 / 6	7480	8800	9790	7590	8800	9900	7040	8250	9130	14086
3-Stage full free lift	V500	131.3	197.6	4.7	4.7	6 / 6	7260	8580	9460	7370	8580	9592	6820	8030	8910	14086
	TF370	79.7	146.9	44.8	32.0	6 / 6	7480	8800	9790	7480	8800	9790	6930	8140	9130	14086
	TF400	83.7	158.7	48.8	35.9	6 / 6	7260	8580	9570	7370	8690	9570	6820	8030	9020	14086
	TF430	87.6	170.5	52.7	39.8	6 / 6	7150	8470	9350	7260	8470	9350	6710	7920	8800	14086
	TF450	90.0	177.6	55.1	42.2	6 / 6	7040	8360	9240	7150	8470	9240	6600	7810	8690	14086
	TF470	93.5	185.8	58.6	45.7	6 / 6	6930	8250	9130	7040	8360	9130	6490	7700	8580	14086
	TF500	97.4	197.6	62.6	49.7	6 / 6	6820	8030	9020	6930	8140	9020	6380	7590	8470	14086
	TF550	104.5	217.3	69.6	56.8	6 / 6	6600	7810	8690	6710	7920	8690	6160	7370	8140	14086
	TF600	111.6	237.4	76.7	63.9	6 / 6	6380	7590	8470	6490	7700	8470	6050	7150	7920	14086

\* Standard

Mast Specification (50B-7)

Mast Type		Overall Height (Lowered) (mm)	Maximum Fork Height (mm)	Free Lift		Tilt Angle (deg) Fwd / Bwd	Load Capacity without side shift at (500mm LC) (kg)		Load Capacity with side shift at (500mm LC) (kg)		Truck Weight (Unloaded) (kg)	
				With Backrest (mm)	Without Backrest (mm)		Single Tire	Double Tire	Single Tire	Double Tire	Single Tire	Double Tire
		50B-7	50B-7	50B-7	50B-7		50B-7		50B-7		50B-7	
2-Stage limited free lift	V260	81.9	103.1	4.7	4.7	6 / 10	10978	10978	10978	10978	16522	16777
	* V290	87.8	115.0	4.7	4.7	6 / 10	10978	10978	10978	10978	16579	16834
	V320	93.7	126.8	4.7	4.7	6 / 10	10978	10978	10978	10978	16635	16890
	V340	99.6	134.6	4.7	4.7	6 / 10	10978	10978	10978	10978	16689	16945
	V360	103.5	142.5	4.7	4.7	6 / 10	10978	10780	10978	10890	16726	16981
	V390	111.8	154.3	4.7	4.7	6 / 10	10978	10670	10978	10670	16804	17059
	V440	121.7	174.0	4.7	4.7	6 / 6	10978	10340	10780	10340	16897	17152
3-Stage full free lift	V490	131.5	193.7	4.7	4.7	6 / 6	10670	10010	10450	10120	16992	17247
	TF360	79.9	144.2	42.3	31.8	6 / 6	10978	10340	10780	10450	16879	17249
	TF390	83.9	156.0	46.2	35.7	6 / 6	10758	10120	10560	10230	16936	17306
	TF420	87.8	167.8	50.2	39.6	6 / 6	10560	10010	10340	10010	16993	17363
	TF440	90.2	174.9	52.5	42.0	6 / 6	10450	9900	10230	9900	17028	17397
	TF460	93.7	183.1	56.1	45.5	6 / 6	10340	9680	10120	9790	17079	17449
	TF490	97.6	195.0	60.0	49.5	6 / 6	10120	9570	9900	9570	17136	17506
	TF540	104.7	214.6	67.1	56.6	6 / 6	9900	9240	9570	9350	17250	17620
	TF590	111.8	234.7	74.2	63.6	6 / 6	9570	9020	9240	9020	17338	17708

\* Standard

Load Capacity

